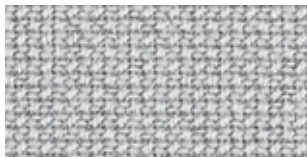


CURA

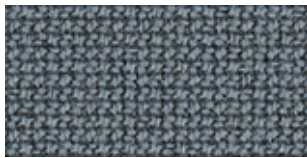
by Gabriel



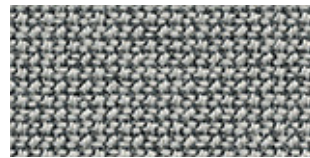
60000



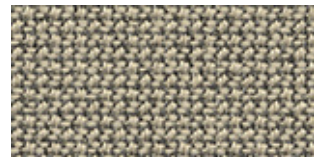
61232



60327



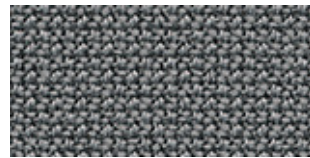
60112



61168



66166



60110



61259



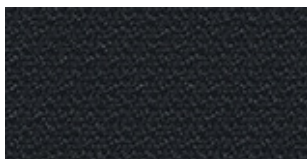
66165



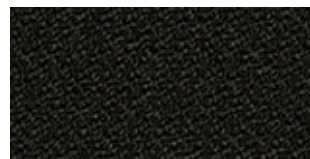
60109



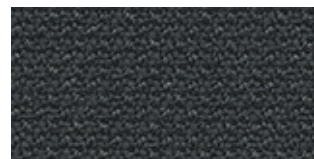
61169



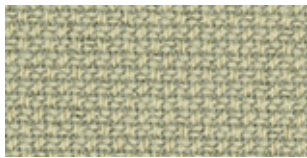
60111



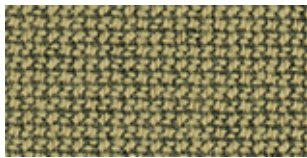
60999



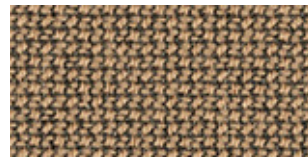
60019



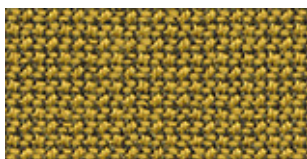
62125



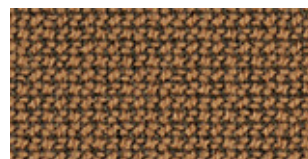
62126



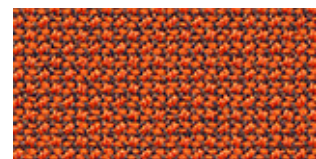
61233



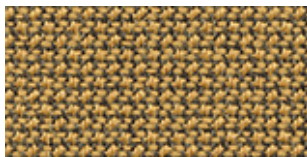
62084



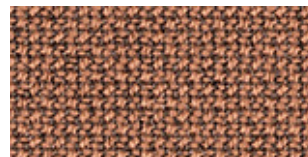
61260



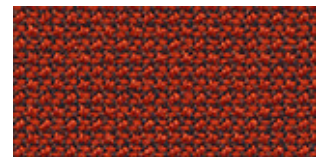
63078



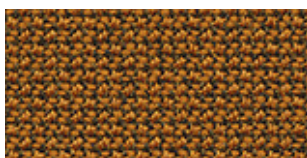
62083



61257



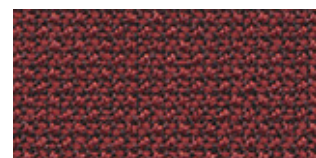
63012



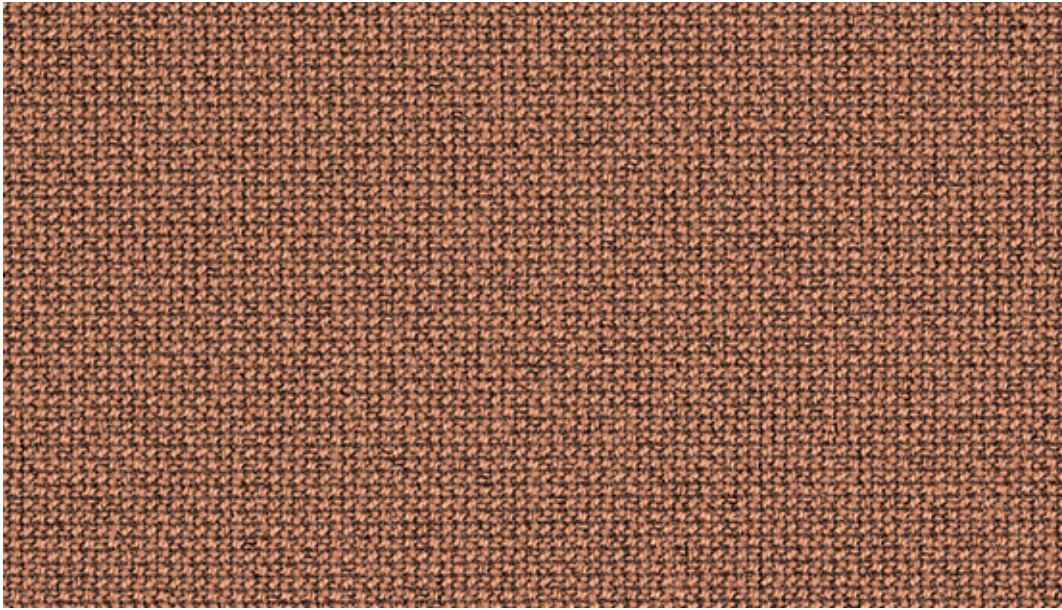
62082



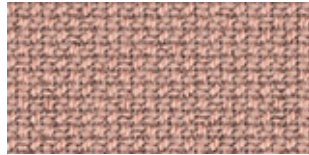
61258



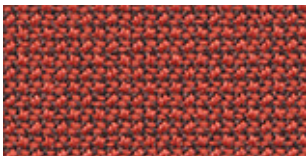
64196



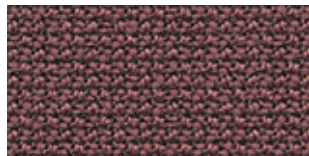
61257



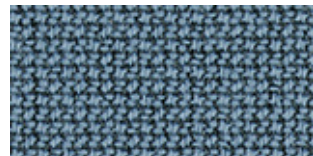
64240



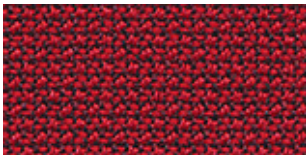
64197



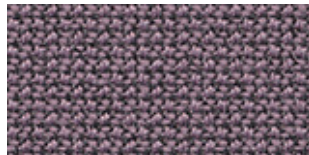
64195



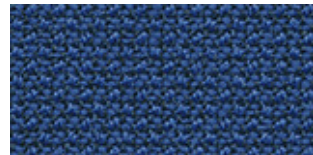
66239



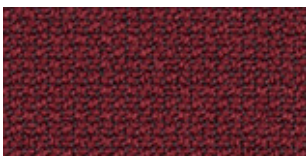
64013



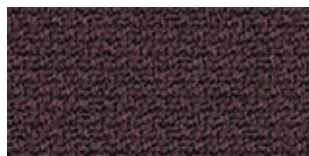
64194



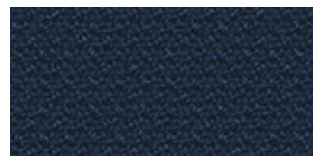
65105



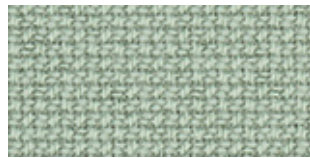
64252



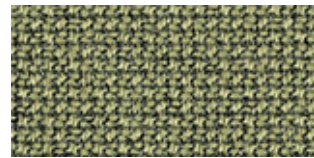
65137



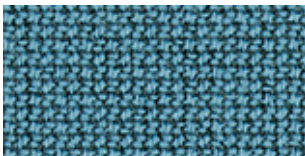
66169



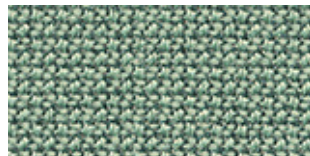
68262



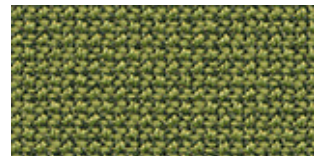
68261



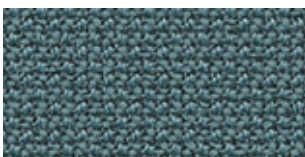
66240



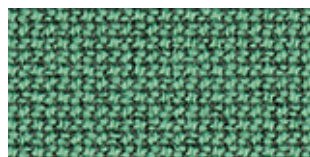
68186



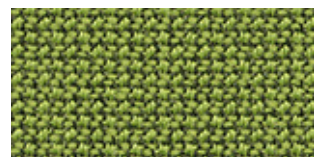
68181



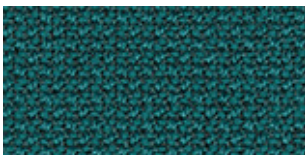
66167



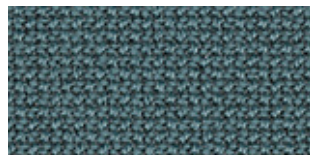
68263



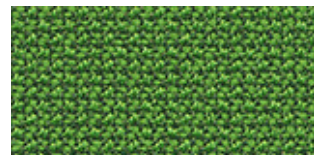
68180



67084



68187



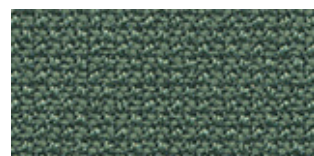
68183



66170

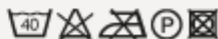
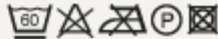


68264



68182

CURA SPECIFICATIONS

Design no.	2480/2544	
Application	upholstery	
Composition	100% post-consumer recycled polyester	
Weight	g/lm oz/lin.yd	420 13.55
Width	cm inches	140 55
Abrasion	rubs martindale (EN ISO 12947-2) double rubs wyzenbeek (ASTM D4157) (heavy duty upholstery)	100,000 100,000
Pilling	scale 1-5, max. 5 - EN ISO 12945-2	4-5
Light fastness	scale 1-8, max. 8 - EN ISO 105-B02	5-8
Rubbing fastness	scale 1-5, max. 5 - EN ISO 105x12 (dry/wet)	4-5/4-5
Maintenance	wash or dry cleaning P(W) Cura is made of polyester which is a material suited for environments with special requirements for cleaning. click here for guidance relating to disinfection.  40°C shrinkage max. 1%.  60°C shrinkage max. 2%.	
Flammability	<u>BS EN 1021 1&2 Cigarette and Match</u> <u>CA TB 117-2013</u> <u>ASTM E 84 Class 1</u>	

